



# VISIT *Malta*

EXPLORE AND LEARN WITH US



## OUR PACKAGES :

- LANGUAGE COURSES
- EXCHANGE PROGRAMS

EXPERIMENT ITALIA, SEDE LEGALE IN  
VIA A. DE GASPERI, 2 14100 ASTI  
C.F/P.I. 92018840055 -  
TEL 0141.532250  
E-MAIL : [INFO@EXPERIMENTITALIA.IT](mailto:INFO@EXPERIMENTITALIA.IT)



# OVERVIEW CORSI DI LINGUA (18+)

## ENGLISH LANGUAGE GENERAL & PROFESSIONAL

PROGRAMMA	DURATA IN SETTIMANE	LESSONS (HOURS)/COSTS X WEEK €		
		<u>20</u>	<u>25</u>	<u>30</u>
GENERAL & INTENSIVE	1 TO 7	785	830	875
	8 TO 20	765	805	850
	21 TO 48	750	790	835
TOP-UP ENGLISH FOR SPECIFIC PURPOSE	1 TO 7	/	/	1060
MEDIT. ENGLISH CELEBRATION CLUB (AGE 50+) CULTURE + ENGLISH	1 TO 4	1030	/	/

## ABSORPTION ENGLISH FOR SPECIFIC PURPOSES

PROGRAMMA	DURATA IN SETTIMANE	LESSONS (HOURS)/COSTS X WEEK €			
		<u>10</u>	<u>15</u>	<u>20</u>	<u>30</u>
WEEKDAYS 1 TO 1 LESSONS	1 TO 7	870	1030	1195	1505
2 TO 1 LESSONS	1 TO 7	735	845	955	1145
WEEKENDS 1 TO 1	FRIDAY TO SUNDAY	/	/	1355	1705
2 TO 1 LESSONS	FRIDAY TO SUNDAY	/	/	1055	1305
ONILE/BLENDED 1 TO 1	1 TO 7	585 (4H)	690 (8H)	800 (12H)	1035 (20H)



Course Type	Key Features	Suitable For
General English	Focus on daily communication, fluency, vocabulary, and grammar	All levels, from beginner to advanced.
Intensive English	Faster progress in all language skills (listening, speaking, reading, writing)	Students wanting to improve quickly.
Business English	Covers business correspondence, reports, presentations, and negotiations	Professionals and those needing English for business (requires B1 level).
Top-up English for Specific Purposes	10 one-on-one lessons focused on a specific field (e.g., Law, Medicine, Aviation)	Learners with specific professional or academic vocabulary needs.
Mediterranean English Celebration (Club 50+)	Combines language practice with cultural activities and exploration of Malta for mature learners	Students aged 50 and over.





# THE BEAUTY OF MALTA





# MORE DETAILS

OUR ORGANIZATION PARTNER IN MALTA OFFERS A RANGE OF ENGLISH COURSES FOR ADULTS, JUNIORS, AND FAMILIES, LEVERAGING ITS LONG-STANDING HISTORY AS THE FIRST ENGLISH LANGUAGE SCHOOL IN MALTA. THE SCHOOL IS LOCATED IN GŻIRA AND IS KNOWN FOR ITS SMALL CLASS SIZES AND HOLISTIC APPROACH TO LEARNING.

## SCHOOL ENVIRONMENT AND FACILITIES

NSTS IS HOUSED IN A TRADITIONAL MALTESE TOWNHOUSE IN GŻIRA, OFFERING A UNIQUE AND VIBRANT LEARNING ATMOSPHERE.

- **LOCATION:** THE SCHOOL IS IN A QUIET AREA YET WITHIN A SHORT WALKING DISTANCE TO THE SEAFRONT, CAFÉS, AND SHOPS. IT'S ALSO ABOUT 15 MINUTES BY BUS FROM VALLETTA.
- **FACILITIES:** STUDENTS CAN ENJOY A BEAUTIFUL GARDEN WITH AN ORANGE GROVE, OPEN-AIR TERRACES, A LENDING LIBRARY, AND AN OUTDOOR CAFETERIA. THE CLASSROOMS ARE SPACIOUS AND EQUIPPED WITH INTERACTIVE WHITEBOARDS AND AIR CONDITIONING.
- **TEACHING STAFF:** THE TEACHERS ARE CELTA CERTIFIED AND MANY HOLD A DELTA DIPLOMA OR A HIGHER DEGREE IN ENGLISH. THE AVERAGE CLASS SIZE IS SMALL, WITH ABOUT 6 TO 8 STUDENTS, ENSURING PERSONALIZED ATTENTION.

## ACCOMMODATION AND ACTIVITIES

TO SUPPORT A FULL IMMERSION EXPERIENCE, NSTS OFFERS ACCOMMODATION AND A RICH PROGRAM OF ACTIVITIES.

- **ACCOMMODATION:** THE MAIN OPTION IS THE NSTS CAMPUS RESIDENCE, WHICH FEATURES STUDIO APARTMENTS FOR ADULTS. A NEW CAMPUS RESIDENCE (NSTS 60) IS ALSO SET TO OPEN IN SPRING 2025. FOR JUNIOR STUDENTS, FULL-BOARD ACCOMMODATION IN MULTI-BEDDED ROOMS IS AVAILABLE.
- **ACTIVITIES:** THE SCHOOL ORGANIZES A ROBUST MENU OF ACTIVITIES, INCLUDING VISITS TO HISTORICAL SITES LIKE VALLETTA AND THE "THREE CITIES," BEACH GAMES, BBQ NIGHTS, AND INTERNATIONAL COOKING EVENINGS. THESE ARE EXCELLENT OPPORTUNITIES TO PRACTICE ENGLISH AND SOCIALIZE.

## PRACTICAL INFORMATION

- **LESSON DURATION:** EACH LESSON IS 45 MINUTES.
- **PLACEMENT TEST:** A TEST ON THE FIRST DAY ENSURES YOU ARE PLACED IN THE CORRECT LEVEL.
- **CERTIFICATE:** YOU WILL RECEIVE A CERTIFICATE OF ATTENDANCE OR MERIT UPON COMPLETION, SUBJECT TO A MINIMUM 80% ATTENDANCE.
- **PUBLIC HOLIDAYS:** IT'S IMPORTANT TO CHECK THE SCHOOL'S PUBLIC HOLIDAY SCHEDULE, AS LESSONS ARE NOT HELD ON THESE DAYS AND ARE GENERALLY NOT REFUNDED.

I HOPE THIS OVERVIEW GIVES YOU A CLEAR PICTURE OF WHAT TO EXPECT. IF YOU HAVE A SPECIFIC COURSE OR AGE GROUP IN MIND, I CAN HELP YOU FIND MORE DETAILED INFORMATION.



# ACCOMMODATIONS

Oct - Feb	1 to 7 weeks €		
Price x week x person	Single	Twin	Triple
Apartments	863	786	723
Campus Studio	835	751	695
Campus Room	772	695	/
Host Family (half-board)	849	786	786



Oct - Feb	8 to 20 weeks €		
Price x week x person	Single	Twin	Triple
Apartments	849	779	716
Campus Studio	786	730	688
Campus Room	716	681	/
Host Family (half-board)	842	772	772

# ACCOMMODATIONS

Feb-June / Aug-Oct	1 to 7 weeks €		
Price x week x person	Single	Twin	Triple
Apartments	891	814	744
Campus Studio	849	779	730
Campus Room	793	702	/
Host Family (half-board)	877	814	814



Feb-June / Aug-Oct	8 to 20 weeks €		
Price x week x person	Single	Twin	Triple
Apartments	849	779	716
Campus Studio	807	751	716
Campus Room	758	695	
Host Family (half-board)	842	772	772

# ACCOMMODATIONS

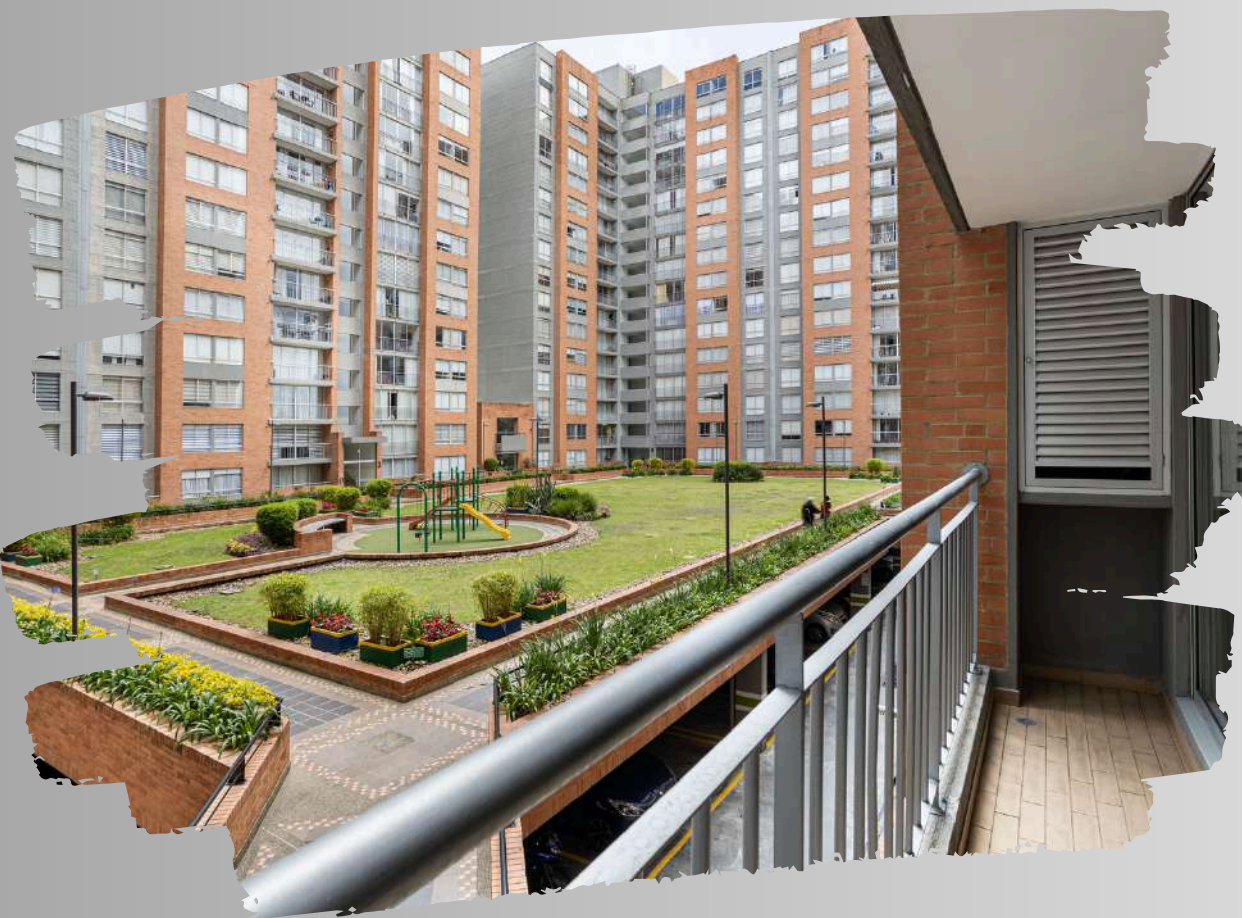
June / Aug	1 to 7 weeks €		
Price x week x person	Single	Twin	Triple
Apartments	947	884	786
Campus Studio	898	814	779
Campus Room	856	758	
Host Family (half-board)	905	835	835



June / Aug	8 to 20 weeks €		
Price x week x person	Single	Twin	Triple
Apartments	940	849	779
Campus Studio	877	800	765
Campus Room	814	730	
Host Family (half-board)	891	828	828



# THE BEAUTY OF MALTA







**COSTS INCLUDE:**

ADMINISTRATIVE FEES FOR THE ITALIAN OFFICE; MALTA OFFICE FEES; PRE-PROGRAMME ORIENTATION; SEARCH AND SELECTION OF A HOST FAMILY (INCLUDING PERSONAL INTERVIEW AND VISIT) AND SCHOOL; ASSISTANCE FROM A LOCAL COORDINATOR THROUGHOUT THE ENTIRE STAY; 24/7 EMERGENCY PHONE ASSISTANCE; AIRPORT PICK-UP AND DROP-OFF.

**COSTS DO NOT INCLUDE:**

PERSONAL EXPENSES (INCLUDING TELEPHONE AND INTERNET COSTS) - PARTICIPANTS ARE ADVISED TO HAVE POCKET MONEY; MEALS OUTSIDE THE CHOSEN PLAN; SCHOOL UNIFORM (IF REQUIRED BY THE SCHOOL); TEXTBOOKS; SCHOOL SUPPLIES/STATIONERY; LOCAL TRANSPORT (E.G., PUBLIC TRANSPORT PASSES); TRANSPORT BETWEEN THE HOST FAMILY AND SCHOOL; ROUND-TRIP TRANSPORT FROM ITALY TO THE DESTINATION COUNTRY.

- **INSURANCE: PARTICIPANTS MUST VERIFY COVERAGE FOR URGENT AND NON-URGENT HEALTHCARE FOR ITALIAN CITIZENS ABROAD WITH THEIR LOCAL HEALTH AUTHORITY (ASL). UPON REQUEST, WE CAN EVALUATE THE USE OF OUR INSURANCE PACKAGES.**

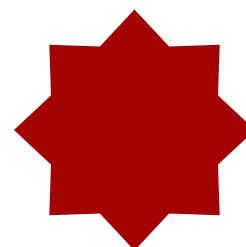
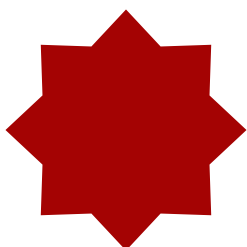
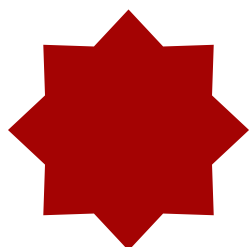
**REGISTRATION AND PAYMENTS:**

THE APPLICATION FORM MUST BE SUBMITTED WITH THE €1000 REGISTRATION FEE/DEPOSIT (WHICH IS INCLUDED IN THE TOTAL PROGRAMME COST) AND SENT TO THE ASTI OFFICE BY THE INDICATED DEADLINES. FOR THE CONVENIENCE OF PARTICIPANTS, THE PAYMENT WILL BE SPLIT INTO TWO INSTALMENTS: THE FIRST (€700) UPON REGISTRATION AND THE SECOND AT LEAST 6 WEEKS BEFORE THE ARRIVAL DATE. THE FULL PAYMENT MUST BE MADE NO LATER THAN 6 WEEKS BEFORE THE ARRIVAL DATE.

**WITHDRAWAL PENALTIES:**

A FIXED €700 CANCELLATION FEE APPLIES IF THE PARTICIPATION APPLICATION IS WITHDRAWN MORE THAN 10 DAYS AFTER THE ACCEPTANCE DATE. BEYOND THIS PENALTY, ADDITIONAL PENALTIES WILL BE APPLIED IF THE WITHDRAWAL OCCURS AFTER ACCEPTANCE BY THE FOREIGN OFFICE:  
NO REFUND WILL BE ISSUED IF THE WITHDRAWAL OCCURS 5 DAYS OR LESS BEFORE THE PROGRAMME START DATE OR IF THE STUDENT FAILS TO ARRIVE.

**NB: THE TERM "PLACEMENT" REFERS TO THE ASSIGNMENT OF A HOST FAMILY IN THE CHOSEN COUNTRY FOR THE SCHOOL PROGRAMME. DETAILS OF THE HIGH SCHOOL THE PARTICIPANT WILL ATTEND ABROAD MAY BE COMMUNICATED AT THE SAME TIME AS THE HOST FAMILY DETAILS OR AT A LATER DATE.**





# OVERVIEW: STUDY ABROAD - GAP YEAR

## UNIVERSITY PATHWAY & FULL-BOARDING ACCOMMODATION

<u>PROGRAMMA(18+)</u>	<u>DURATION</u>	<u>SINGLE €</u>	<u>TWIN €</u>
JAN - APR / SEPT - DEC / JAN - MAR	1 TERM	<u>9810</u>	<u>8805</u>
JAN - MAY / SEP - FEB / JAN - MAY	1 SEM NH	13366	11745
FEB - JUN / AUG - DEC / FEB - JUN	1 SEM SH	12806	11321
JAN - JUNE / SEP - MAR	2 TERMS	15356	13344
JAN - JUNE	2 TERMS	16237	14077
SEP - JUNE	2 SEMESTERS NH	21966	18823
FEB - DEC	2 SEMESTERS NH	22681	19198
SEP - JUNE	1 YEAR	21966	18823

DEVELOP YOUR SOFT SKILLS AND LOOK FOR AN INTERNATIONAL ENGLISH LANGUAGE AND BUSINESS MANAGEMENT STUDY PROGRAMME TO EXPAND YOUR OPTIONS TO UNIVERSITIES WORLD-WIDE, THE SPECIAL UNIVERSITY PATHWAY ENGLISH AND BUSINESS MANAGEMENT PROGRAMME WILL HELP YOU ACHIEVE THIS.

OUTCOMES

- STRENGTHEN YOUR ENGLISH LANGUAGE TO PROFICIENCY LEVEL FROM LOWER INTERMEDIATE
- PREPARE TO SIT FOR INTERNATIONALLY RECOGNISED QUALIFICATIONS: IELTS OR CAMBRIDGE.
- PERSONAL GROWTH AND SKILL-BUILDING
- DEEPEN THE KNOWLEDGE, UNDERSTANDING OF AND RESPECT FOR OTHER CULTURES

IT’S ALL ABOUT YOU. BE PART OF AN INTERNATIONAL COMMUNITY IN A FRIENDLY, FAMILY ATMOSPHERE. BENEFIT NOT ONLY FROM OUR HIGH STANDARDS BUT ALSO FROM OUR DEDICATION TO PROMOTING INTERCULTURAL LEARNING TO PREPARE STUDENTS FOR LIVING IN DIVERSE SOCIETIES AND WORKING IN A GLOBALIZED WORLD.

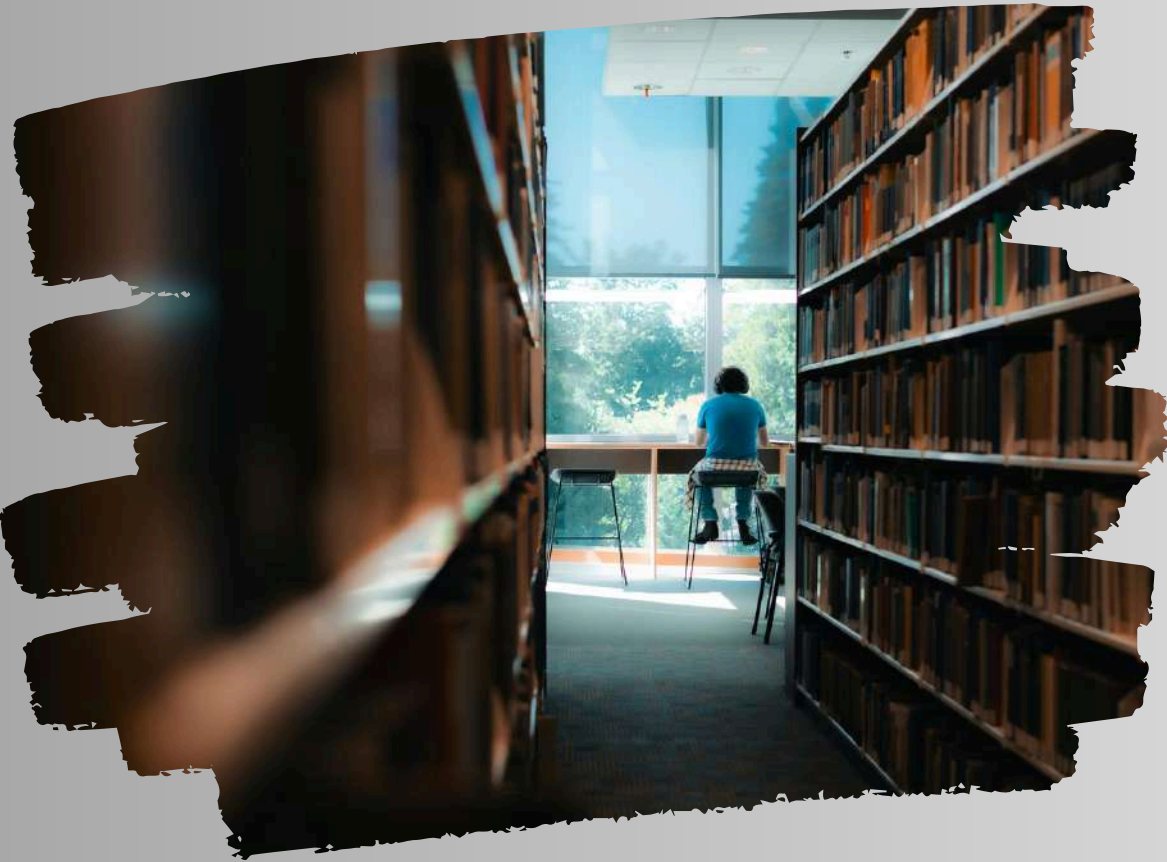
WE ARE EXPERIENCED IN HOSTING INTERNATIONAL STUDENTS. WHAT MAKES US DIFFERENT FROM OTHER PROVIDERS IS THAT WE FOCUS ON THE PASTORAL SUPPORT AND SPECIAL CARE BEFORE AND DURING YOUR STAY AND OUR FOCUS ON INTERCULTURAL LEARNING THROUGH:

- ACQUIRING LANGUAGE SKILLS
- DEEPENING THE KNOWLEDGE, UNDERSTANDING OF AND RESPECT FOR OTHER CULTURES
- THE ABILITY TO CHANGE PERSPECTIVE
- EMPATHY, TOLERANCE AND OPENNESS TO NEW THINGS
- INTERCULTURAL SENSITIVITY
- ABILITY TO COMMUNICATE AND COOPERATE





# THE BEAUTY OF MALTA







#### **COSTS INCLUDE:**

ADMINISTRATIVE FEES FOR THE ITALIAN OFFICE; MALTA OFFICE FEES; PRE-PROGRAMME ORIENTATION; SEARCH AND SELECTION OF A HOST FAMILY (INCLUDING PERSONAL INTERVIEW AND VISIT) AND SCHOOL; ASSISTANCE FROM A LOCAL COORDINATOR THROUGHOUT THE ENTIRE STAY; 24/7 EMERGENCY PHONE ASSISTANCE; AIRPORT PICK-UP AND DROP-OFF.

#### **COSTS DO NOT INCLUDE:**

PERSONAL EXPENSES (INCLUDING TELEPHONE AND INTERNET COSTS) - PARTICIPANTS ARE ADVISED TO HAVE POCKET MONEY; MEALS OUTSIDE THE CHOSEN PLAN; SCHOOL UNIFORM (IF REQUIRED BY THE SCHOOL); TEXTBOOKS; SCHOOL SUPPLIES/STATIONERY; LOCAL TRANSPORT (E.G., PUBLIC TRANSPORT PASSES); TRANSPORT BETWEEN THE HOST FAMILY AND SCHOOL; ROUND-TRIP TRANSPORT FROM ITALY TO THE DESTINATION COUNTRY.

- **INSURANCE: PARTICIPANTS MUST VERIFY COVERAGE FOR URGENT AND NON-URGENT HEALTHCARE FOR ITALIAN CITIZENS ABROAD WITH THEIR LOCAL HEALTH AUTHORITY (ASL). UPON REQUEST, WE CAN EVALUATE THE USE OF OUR INSURANCE PACKAGES.**

#### **REGISTRATION AND PAYMENTS:**

THE APPLICATION FORM MUST BE SUBMITTED WITH THE €2500 REGISTRATION FEE/DEPOSIT (WHICH IS INCLUDED IN THE TOTAL PROGRAMME COST) AND SENT TO THE ASTI OFFICE BY THE INDICATED DEADLINES. FOR THE CONVENIENCE OF PARTICIPANTS, THE PAYMENT WILL BE SPLIT INTO TWO INSTALMENTS: THE FIRST (€2500) UPON REGISTRATION AND THE SECOND AT LEAST 6 WEEKS BEFORE THE ARRIVAL DATE. THE FULL PAYMENT MUST BE MADE NO LATER THAN 6 WEEKS BEFORE THE ARRIVAL DATE.

#### **WITHDRAWAL PENALTIES:**

A FIXED €1500 CANCELLATION FEE APPLIES IF THE PARTICIPATION APPLICATION IS WITHDRAWN MORE THAN 10 DAYS AFTER THE ACCEPTANCE DATE. BEYOND THIS PENALTY, ADDITIONAL PENALTIES WILL BE APPLIED IF THE WITHDRAWAL OCCURS AFTER ACCEPTANCE BY THE FOREIGN OFFICE:

NO REFUND WILL BE ISSUED IF THE WITHDRAWAL OCCURS 5 DAYS OR LESS BEFORE THE PROGRAMME START DATE OR IF THE STUDENT FAILS TO ARRIVE.

**NB: THE TERM "PLACEMENT" REFERS TO THE ASSIGNMENT OF A HOST FAMILY IN THE CHOSEN COUNTRY FOR THE SCHOOL PROGRAMME. DETAILS OF THE HIGH SCHOOL THE PARTICIPANT WILL ATTEND ABROAD MAY BE COMMUNICATED AT THE SAME TIME AS THE HOST FAMILY DETAILS OR AT A LATER DATE.**

OVERVIEW: INTERNSHIP, VOLUNTEERING  
& ACCOMMODATION (18+)

<u>PRICE X WEEK X</u> <u>PERSON</u>	<u>03-07 WKS</u> ( <u>COSTS INCLUDE ONE TIME REG. FEE</u> <u>390€</u> )			<u>08-52 WKS</u> ( <u>COSTS INCLUDE ONE TIME REG. FEE</u> <u>555€</u> )		
<u>PROGRAMMA(18+)</u>	<u>SINGLE €</u>	<u>TWIN €</u>	<u>TRIPLE €</u>	<u>SINGLE</u> <u>€</u>	<u>TWIN €</u>	<u>TRIPLE €</u>
01 NOV 25 - 27 FEB 26 & 31 OCT 26 - 26 FEB 27						
NSTS 60 STUDIO ENSUITE SHOWER, KITCHEN, B&B	1403	1326	1263	1547	1477	1414
NSTS CAMPUS STUDIO ENSUITE SHOWER, KITCHEN, B&B	1375	1291	1256	1498	1435	1393
NSTS CAMPUS ROOM PRIVATE EXTERNAL SHOWER, B&B	1312	1235		1421	1379	
28 FEB 26 - 12 JUN 26 & 29 AUG 26 - 30 OCT 26 & 27 FEB 27 - 25 JUN 27						
NSTS 60 STUDIO ENSUITE SHOWER, KITCHEN, B&B	1431	1354	1284	1568	1498	1435
NSTS CAMPUS STUDIO ENSUITE SHOWER, KITCHEN, B&B	1389	1305	1284	1526	1456	1428
NSTS CAMPUS ROOM PRIVATE EXTERNAL SHOWER, B&B	1340	1242		1456	1393	
13 JUN 26 - 28 AUG 26						
NSTS 60 STUDIO ENSUITE SHOWER, KITCHEN, B&B	1480	1424	1326	1631	1554	1470
NSTS CAMPUS STUDIO ENSUITE SHOWER, KITCHEN, B&B	1445	1368	1305	1589	1505	1449
NSTS CAMPUS ROOM PRIVATE EXTERNAL SHOWER, B&B	1396	1298		1519	1449	



# MORE DETAILS

## INTERNSHIP & ENGLISH PROGRAMME

YOU GAIN GREATER COMPETENCE IN ENGLISH AND WIDER INTERCULTURAL EXCHANGE EXPERIENCES.

OUR INTERNSHIP PROGRAMMES ARE INVOLVING, HIGH LEVEL AND TAILOR-MADE IN LINE WITH YOUR UNIVERSITY STUDIES. YOUR INTERNSHIP PLACEMENT WILL BE IN SMALL AND MEDIUM-SIZED COMPANIES, CORPORATES OR PROFESSIONAL PARTNERSHIPS SO YOU CAN REALLY GET TO KNOW THE ENVIRONMENT AND BE PART OF THE TEAM. YOU MAY OPT FOR AN INTERNSHIP, OR FOR A COMBINED ENGLISH AND INTERNSHIP EXPERIENCE BY FOLLOWING 40 OR 60 LESSONS OF GENERAL ENGLISH DURING THE FIRST 2 WEEKS IF YOU WANT TO DEVELOP YOUR ENGLISH PROFICIENCY INTENSELY.

### PROGRAMME FACTS

- **START: EVERY MONDAY OF THE YEAR**
- **DURATION: 3-52 WEEKS**
- **MINIMUM LEVEL OF ENGLISH A2**
- **MINIMUM WEEKLY INTERNSHIP HOURS: 30**
- **CERTIFICATE OF PLACEMENT**

## ERASMUS+ INTERNSHIPS

### ERASMUS+ FOR VOCATIONAL EDUCATION STUDENTS

YOU ARE OFFERED AN INTERNSHIP PLACEMENT ON THE STRENGTH OF YOUR CV SUPPORTED BY WHAT YOU TELL US IN YOUR SKYPE INTERVIEW ON APPLICATION. YOU ARE A EUROPEAN CITIZEN, ELIGIBLE FOR ERASMUS + OR OTHER FUNDING.

WITH A VOCATIONAL INTERNSHIP IN MALTA YOU CAN GAIN WORK EXPERIENCE ABROAD. BESIDES, THERE IS NO BETTER WAY TO LEARN A LANGUAGE THAN THROUGH FIRST-HAND PRACTICE AND EXPERIENCE.

WE INVITE TEACHERS FROM VOCATIONAL INSTITUTIONS TO ENCOURAGE THEIR STUDENTS TO PARTICIPATE IN AN INTERNSHIP. OUR PLACEMENT WILL INTRODUCE YOUR STUDENTS TO THE WORLD OF WORK WHERE THEY WILL RECEIVE HANDS-ON EXPERIENCE AND BE COACHED

### PROGRAMME FACTS

- **START: EVERY MONDAY OF THE YEAR**
- **DURATION: 8-52 WEEKS**
- **MINIMUM LEVEL OF ENGLISH A2**
- **MINIMUM WEEKLY INTERNSHIP HOURS: 30**
- **CERTIFICATE OF PLACEMENT**

## HIGHER EDUCATION PROGRAMME

YOU MAY BE A UNIVERSITY UNDERGRADUATE OR POST-GRADUATE AND HAVE A CLEAR IDEA OF YOUR UPCOMING CAREER OR PROFESSION. YOU MAY BE A VOCATIONAL STUDENT, POSSIBLY STILL BE UNCERTAIN ON YOUR CAREER.

WITH A VOCATIONAL INTERNSHIP IN MALTA YOU CAN GAIN WORK EXPERIENCE ABROAD. BESIDES, THERE IS NO BETTER WAY TO LEARN A LANGUAGE THAN THROUGH FIRST-HAND EXPERIENCE.

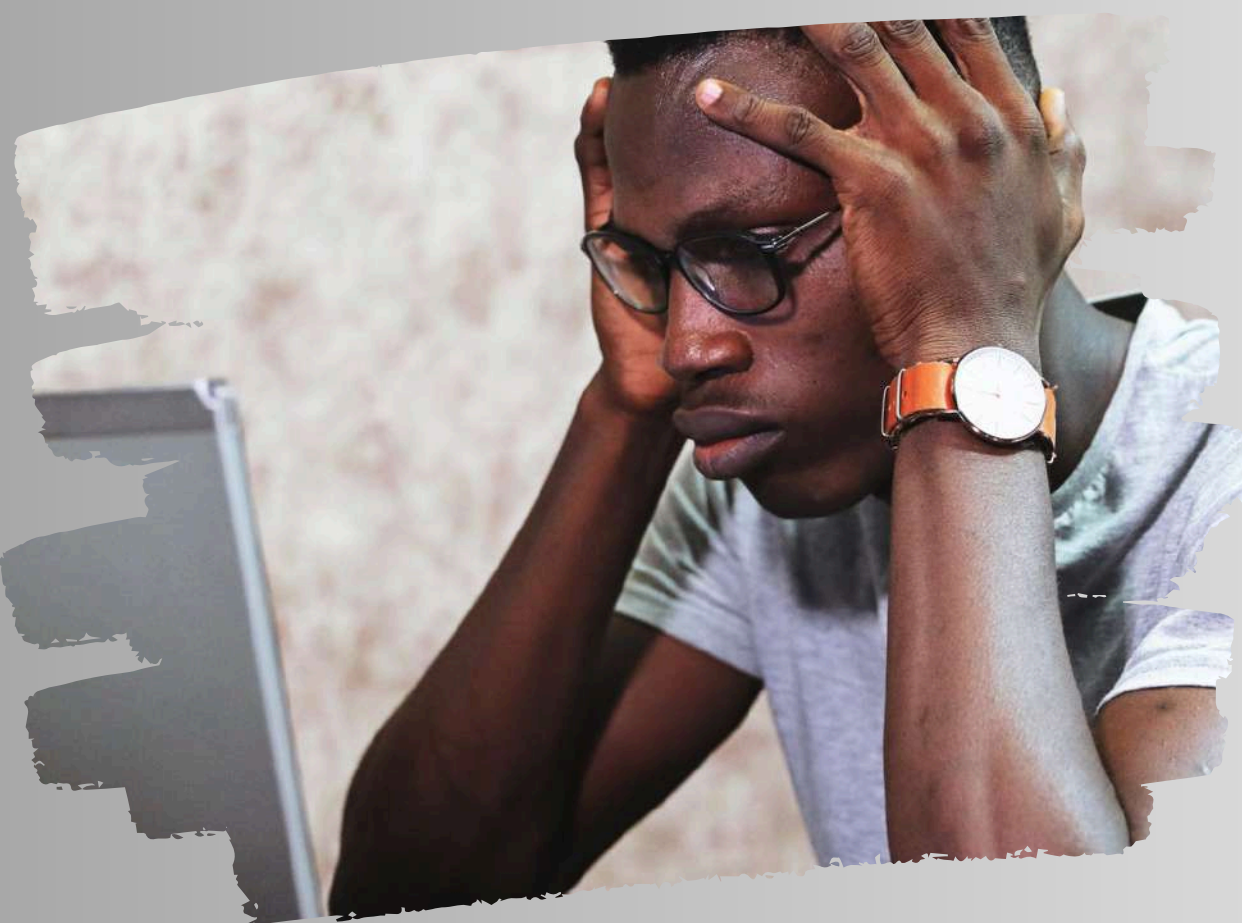
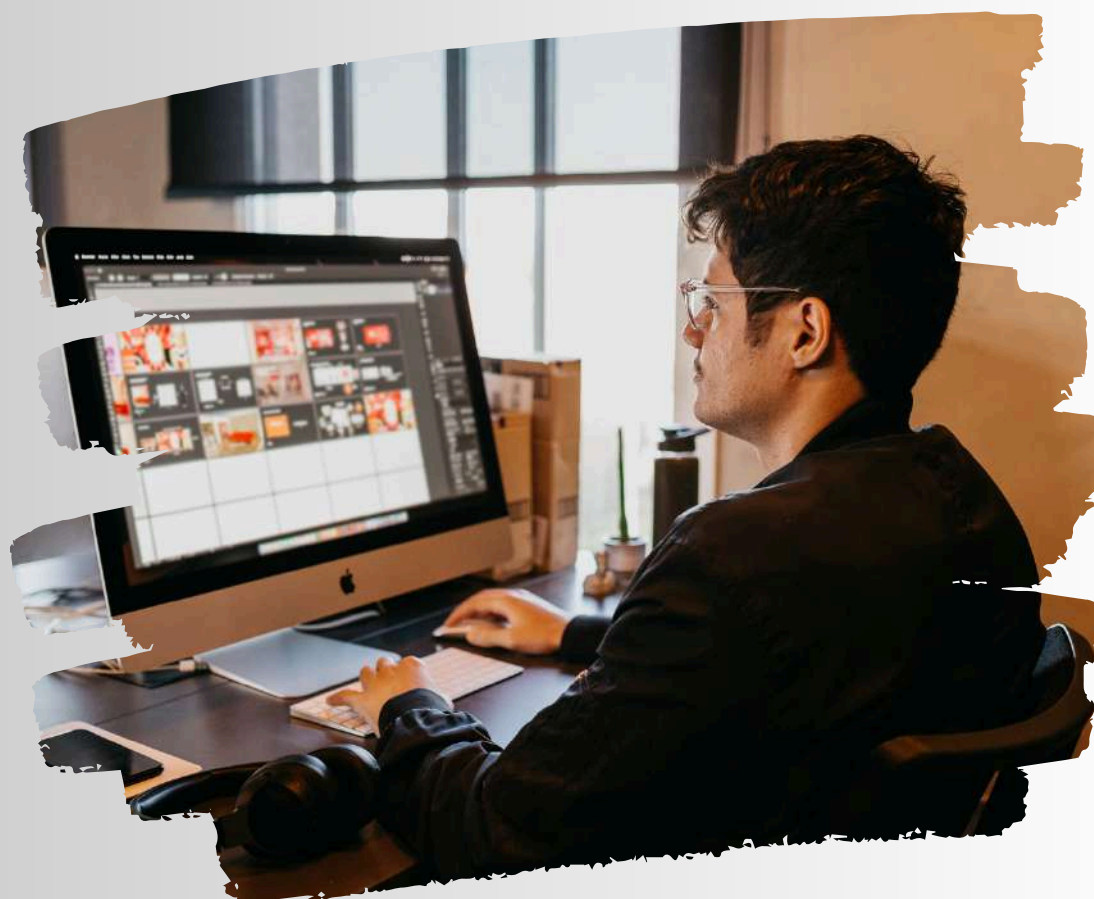
YOU WILL BE ACCORDINGLY PLACED UNDER THE GUIDANCE OF A SUPERVISOR WHO WILL MENTOR YOU THROUGHOUT YOUR INTERNSHIP PROGRAMME. WE WILL ALSO MONITOR YOU PERIODICALLY TO ASSURE YOUR PERFORMANCE UPTAKE IS IN LINE WITH YOUR PERSONAL ASPIRATION AND TO PROVIDE YOU WITH ANY ASSISTANCE.

### PROGRAMME FACTS

- **START: EVERY MONDAY OF THE YEAR**
- **DURATION: 8-52 WEEKS**
- **MINIMUM LEVEL OF ENGLISH A2**
- **MINIMUM WEEKLY INTERNSHIP HOURS: 30**
- **CERTIFICATE OF PLACEMENT**



# THE BEAUTY OF MALTA







**COSTS INCLUDE:**

ADMINISTRATIVE FEES FOR THE ITALIAN OFFICE; MALTA OFFICE FEES; PRE-PROGRAMME ORIENTATION; SEARCH AND SELECTION OF A HOST FAMILY (INCLUDING PERSONAL INTERVIEW AND VISIT) AND SCHOOL; ASSISTANCE FROM A LOCAL COORDINATOR THROUGHOUT THE ENTIRE STAY; 24/7 EMERGENCY PHONE ASSISTANCE; AIRPORT PICK-UP AND DROP-OFF.

- \* **PLEASE NOTE THAT THE ONE-TIME REGISTRATION FEE IS TO BE APPLIED SOLELY TO THE INITIAL WEEK. THIS FEE SHOULD THEN BE DEDUCTED FROM THE SUBSEQUENT WEEKLY COSTS AS OUTLINED IN THE TABLE.**

**COSTS DO NOT INCLUDE:**

PERSONAL EXPENSES (INCLUDING TELEPHONE AND INTERNET COSTS) - PARTICIPANTS ARE ADVISED TO HAVE POCKET MONEY; MEALS OUTSIDE THE CHOSEN PLAN; SCHOOL UNIFORM (IF REQUIRED BY THE SCHOOL); TEXTBOOKS; SCHOOL SUPPLIES/STATIONERY; LOCAL TRANSPORT (E.G., PUBLIC TRANSPORT PASSES); TRANSPORT BETWEEN THE HOST FAMILY AND SCHOOL; ROUND-TRIP TRANSPORT FROM ITALY TO THE DESTINATION COUNTRY.

- **INSURANCE: PARTICIPANTS MUST VERIFY COVERAGE FOR URGENT AND NON-URGENT HEALTHCARE FOR ITALIAN CITIZENS ABROAD WITH THEIR LOCAL HEALTH AUTHORITY (ASL). UPON REQUEST, WE CAN EVALUATE THE USE OF OUR INSURANCE PACKAGES.**

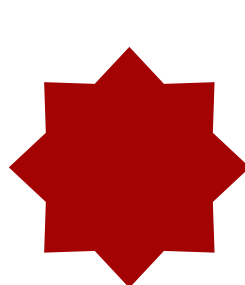
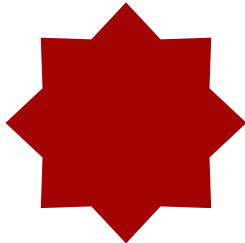
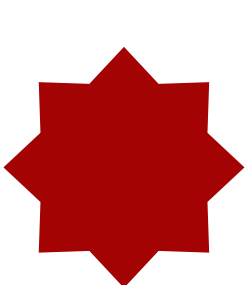
**REGISTRATION AND PAYMENTS:**

THE APPLICATION FORM MUST BE SUBMITTED WITH THE €1000 REGISTRATION FEE/DEPOSIT (WHICH IS INCLUDED IN THE TOTAL PROGRAMME COST) AND SENT TO THE ASTI OFFICE BY THE INDICATED DEADLINES. FOR THE CONVENIENCE OF PARTICIPANTS, THE PAYMENT WILL BE SPLIT INTO TWO INSTALMENTS: THE FIRST (€1000) UPON REGISTRATION AND THE SECOND AT LEAST 6 WEEKS BEFORE THE ARRIVAL DATE. THE FULL PAYMENT MUST BE MADE NO LATER THAN 6 WEEKS BEFORE THE ARRIVAL DATE.

**WITHDRAWAL PENALTIES:**

A FIXED €800 CANCELLATION FEE APPLIES IF THE PARTICIPATION APPLICATION IS WITHDRAWN MORE THAN 10 DAYS AFTER THE ACCEPTANCE DATE. BEYOND THIS PENALTY, ADDITIONAL PENALTIES WILL BE APPLIED IF THE WITHDRAWAL OCCURS AFTER ACCEPTANCE BY THE FOREIGN OFFICE:  
NO REFUND WILL BE ISSUED IF THE WITHDRAWAL OCCURS 5 DAYS OR LESS BEFORE THE PROGRAMME START DATE OR IF THE STUDENT FAILS TO ARRIVE.

**NB: THE TERM "PLACEMENT" REFERS TO THE ASSIGNMENT OF A HOST FAMILY IN THE CHOSEN COUNTRY FOR THE SCHOOL PROGRAMME. DETAILS OF THE HIGH SCHOOL THE PARTICIPANT WILL ATTEND ABROAD MAY BE COMMUNICATED AT THE SAME TIME AS THE HOST FAMILY DETAILS OR AT A LATER DATE.**







# READY TO FLY? VIENI A TROVARCI

EXPERIMENTITALIA, SEDE LEGALE IN VIA A. DE GASPERI, 2 14100 ASTI  
C.F/P.I. 92018840055 - TEL 0141.532250 / +39 328 9761874  
MAIL : INFO@EXPERIMENTITALIA.IT



@EXPERIMENT\_ITALY